

**D** Objektgewebe

**SATIN CS**  
Art. 1521-

**F** Toile déco

**SATIN CS**  
Réf. 1521-

**E** Drapery Fabrics

**SATIN CS**  
Art. 1521-

**ABilmonte**

Bitte beachten:  
In der Darstellung der Muster als PDF-Datei kann es technisch bedingt zu Farbabweichungen kommen.

Attention!  
Photos non contractuelles.

Please note:  
Photos of samples shown in pdf-file may vary slightly in colour due to technical reasons.

**Gerriets**



**SATIN CS**

100 % Polyester.  
 Permanent schwer entflammbar.  
 Bei 150 cm Breite:  
 Stücklängen ca. 50 lfm.  
 Bei 300 cm Breite:  
 Stücklängen ca. 30 lfm.  
 Sonderfarben ab ca. 600 lfm.  
 Mit Akustikzertifikat.

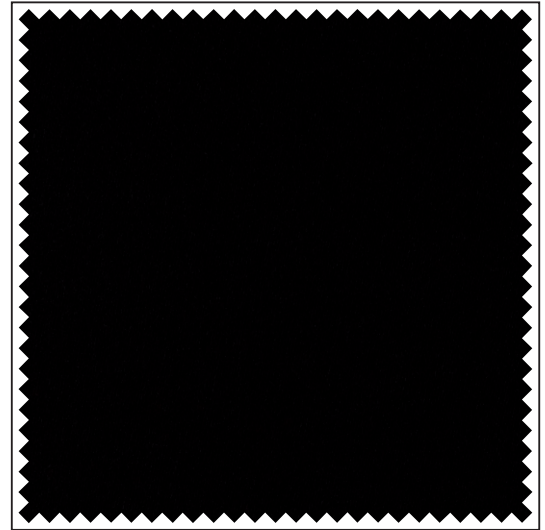
**SATIN CS**

100 % polyester.  
 Largeur 150 cm :  
 Longueur des pièces env. 50 ml.  
 Largeur 300 cm :  
 Longueur des pièces env. 50 ml.  
 Coloris spéciaux à partir d'env.  
 600 ml.  
 Avec certificat acoustique.

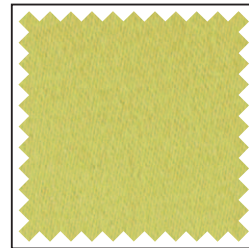
**SATIN CS**

100 % polyester.  
 Inherently flame retardant.  
 59" width: piece lengths are approx.  
 54.7 yds.  
 118" width: piece lengths are  
 approx. 32.8 yds.  
 Minimum quantity for custom dyed  
 colours approx. 656.2 yds.  
 Acoustic certificate available.

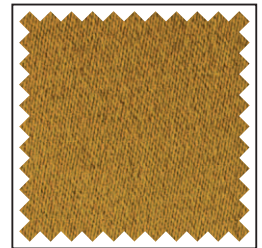
Art. / Réf.	Farben	Coloris	Colours	B1	M1	EN	EN* NFPA	↔ cm	ft/in	g/m <sup>2</sup>	oz/yd <sup>2</sup>
1521-	gesamte Farbkarte	jcoloris ci-contre	all colours	•	•		•	150	59"	350	10.32
1522 -	gesamte Farbkarte	coloris ci-contre	all colours	•	•		•	300	118"	350	10.32



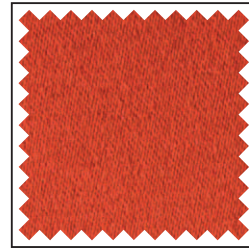
-8528



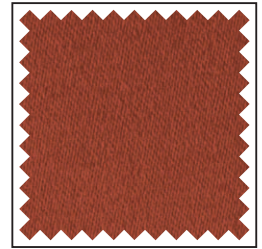
-2214



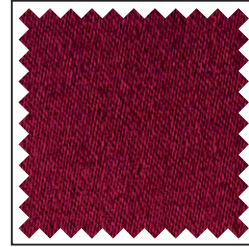
-2169



-2280



-7280



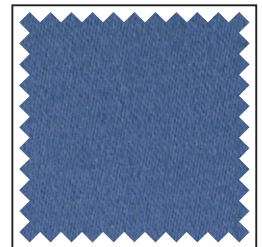
-3234



-4210



-4280



-5165

Erläuterungen der Brandschutznormen B1, M1, BS, EN, EN\* und NFPA unter [www.gerriets.com](http://www.gerriets.com).

Auf Wunsch:  
 Professionell konfektionierte  
 Textilien aus unseren Ateliers.

Informations concernant les normes de feu B1, M1, BS, EN, EN\* et NFPA, consulter notre site [www.gerriets.com](http://www.gerriets.com).

Sur demande :  
 Textiles professionnels  
 confectionnés dans nos ateliers.

For explanation of flame retardant standards B1, M1, BS, EN, EN\* and NFPA, please go to [www.gerriets.com](http://www.gerriets.com).

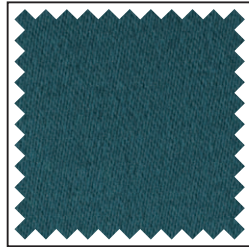
On request:  
 Professional manufacture of our  
 textiles in our workshops.

B1 = DIN 4102 B1  
 M1 = M1  
 BS = BS 5867

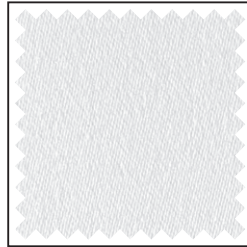
EN = DIN EN 13501-1  
 EN\* = DIN EN 13773  
 NFPA = NFPA 701



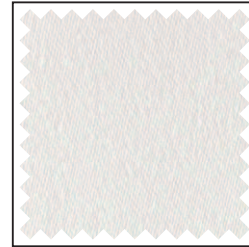
-5232



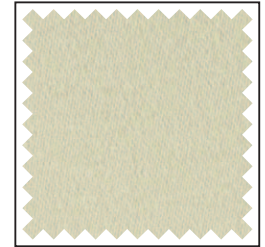
-6215



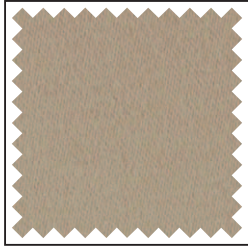
-9180



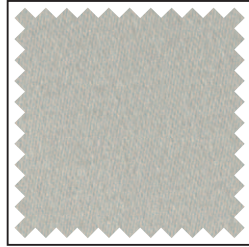
-9110



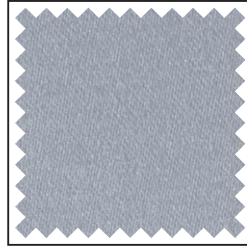
-1110



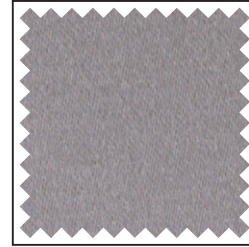
-1117



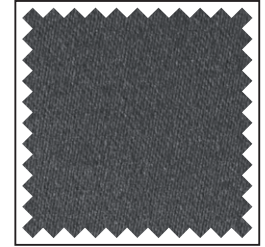
-1134



-8110



-8162



-8163

Der Inhalt dieser Farbkarte entspricht dem Stand zum Zeitpunkt des Drucks.  
Aktuellste Angaben entnehmen Sie bitte den entsprechenden Datenblättern auf unserer Internetseite.

Les informations contenues dans ce nuancier sont valables à la date de l'impression.  
Pour les mises à jour, consulter notre site internet.

All information and colour specifications are valid at the time of printing.  
For latest product details please see the respective online data sheet.

AB ILMONTE  
Nattflyvägen 7  
SE-313 50 ÅLED

Tel. +46-(0)35-181940  
Fax. +46-(0)35-181949

[www.ilmonte.se](http://www.ilmonte.se)  
[sales@ilmonte.se](mailto:sales@ilmonte.se)



02 / 2019

